

Betonelli Early Entry Saw

BNSC150

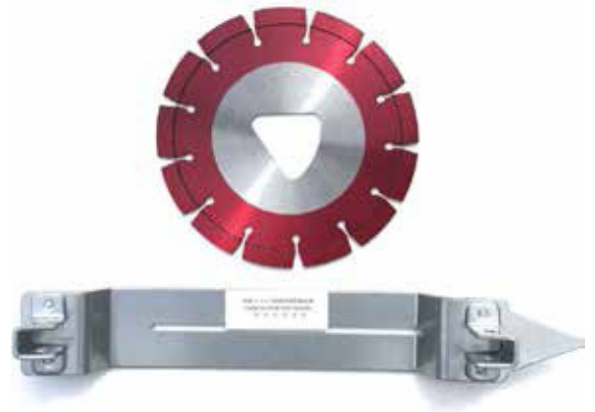
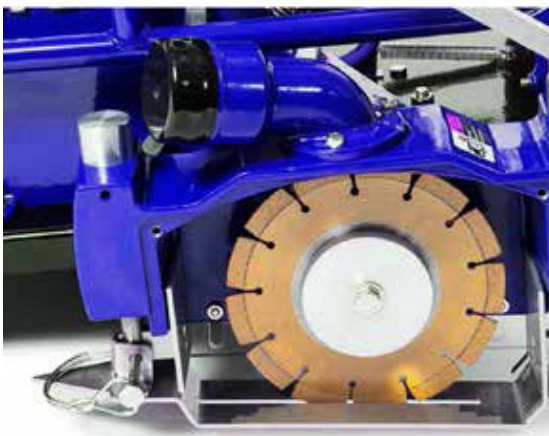
The Betonelli soft concrete cutter is designed to provide control for random cracking of concrete slabs. The machine allows the saw cut to be done while the concrete is still 'green'. The cutter should be used as soon as the concrete can support the weight of the user and the machine without leaving any marks or damage to the concrete surface. Usually within one to two hours of finishing and before final setting.

FEATURES

- Complete with blade and skid plate.
- Folding handle to reduce space during transportation.
- Suitable for control joint curring in green concrete.
- Maximum depth of cut 30mm.
- Long working life.
- Robust frame construction.
- Powered by Honda GX120.



MODEL		BNSC150	
Dimension	LxWxH (approx. mm)	1,125 x 500 x 935	
Operating Weight	kg	35	
Maximum Cutting Depth	mm	30	
Blade Size	mm	150	
Cutting Width	mm	2.4	
Engine		HONDA GX120	



1800 247 769
www.airpoweredservices.com.au

airpowered
We know compressed air